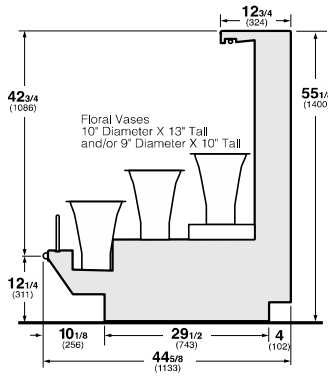




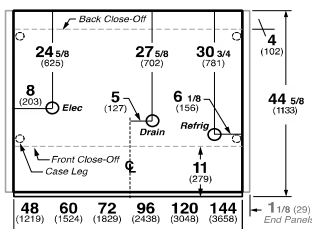
Hussmann refrigerated merchandisers configured for sale for use in the United States meet or surpass the requirements of the DOE 2017 energy efficiency standards.



Q4-SS-F
Floral Multi-Deck Self-Service

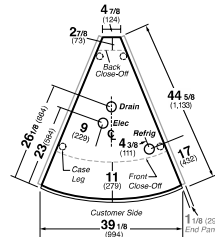


Q4-SS-F Multi-Deck Self-Service Floral

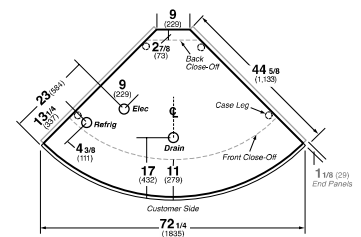


Notes:
Contact your sales representative for information on possible availability of additional case lengths.

Q4-SS-F 45° O/S Wedge



Q4-SS-F 90° O/S Wedge



REFRIGERATION DATA:

CASE LENGTHS/ WEDGES	CASE USAGE*	CAPACITY*** (BTU/HR/FT) (TOTAL FOR WEDGES)			TEMPERATURE (°F)		VELOCITY (FT/MIN)
		RATING CONDITION			EVAPORATOR	DISCHARGE AIR TOP/STORAGE* (°F)	
		AHRI 1200					
4', 5', 6', 8', 10', 12'	FLORAL	800	26	33-35	175-225		
45° OS	FLORAL	2500	26	33-35	175-225		
90° OS	FLORAL	4650	26	33-35	175-225		

*APPROVED FOR NON-CRITICAL TEMP FLORAL ONLY
 **FRONT DISCHARGE AIR MEASURED INSIDE AIR CURTAIN HONEYCOMB
 ***REFRIGERATION NOTES:

- 1) BTU'S DO NOT INCLUDE LIGHTS. ADD 10 BTUS/FT/SHELF OR CANOPY FOR OPTIONAL LED LIGHTS
- 2) AHRI 1200 RATING POINT FOR ENERGY CONSUMPTION COMPARISON ONLY
- 3) USE DEW POINT FOR HIGH GLIDE REFRIGERANTS. CARE SHOULD BE TAKEN TO USE THE DEW POINT IN P/T TABLES FOR MEASURING AND ADJUSTING SUPERHEAT. ADJUST EVAPORATOR PRESSURE AS NEEDED TO MAINTAIN THE DISCHARGE AIR TEMPERATURE SHOWN.
- 4) RATING CONDITION IS NSF TYPE I, 75°F / 55% RELATIVE HUMIDITY

CASE LENGTHS	EST. REFG. CHRG. (LBS) 404A	20°F GLYCOL 6" RISE INLET	
		GPM	PSI
4'	0.5	1.1	3.0
5'	0.7	1.4	4.7
6'	0.8	1.7	6.7
8'	1.1	2.2	3.1
10'	1.4	2.7	5.3
12'	1.6	3.2	6.2
45° OS	0.2	0.8	0.9
90° OS	0.4	1.4	3.2

REFRIGERATION DATA CONTINUED:

LOCATION	ELEC. THERMOSTAT / AIR SENSOR SETTINGS			DEFROST TYPE	TIME (MIN)	DEFROST FREQUENCY (#/DAY)	TERM TEMP (°F) COIL ONLY	DRIP TIME	DEFROST WATER (LBS/DAY /FT)
	USAGE	CUT IN (°F)	CUT OUT (°F)						
SELF SERVICE	FLORAL	35	32	OFF TIME	25	6	48	N/A	5

END PANEL WIDTH KEY		
# OF END PNLS	END PNL WIDTH (IN.)	TOTAL ADDED LENGTH (IN.)
1	1.125	1.125
2	1.125	2.25

ELECTRICAL DATA: STANDARD FANS, HEATERS, LED LIGHTS (115 VOLT)

CASE LENGTH	EVAPORATOR FANS					CANOPY LIGHTS LED		LED SHELF LIGHTS		MAX. LED LOAD (W/ ALL OPTIONS)		ANTI-SWEAT HEATERS (ON FAN CIRCUIT)		CONVENIENCE OUTLETS (OPTIONAL)		
	# OF EVAP FANS	BLADE DIA. (IN.)	BLADE PITCH (°)	AMPS	WATTS	AMPS	WATTS	AMPS	WATTS	AMPS	WATTS	AMPS	WATTS	# OUTLETS	VOLTS	AMPS
4'	2	6.75	25	0.24	16	0.09	10	0.27	31	0.36	41	N/A	N/A	N/A	N/A	N/A
5'	2	6.75	30	0.24	16	0.11	13	0.34	39	0.45	52	N/A	N/A	N/A	N/A	N/A
6'	4	6.75	20	0.48	32	0.13	15	0.40	46	0.54	62	N/A	N/A	N/A	N/A	N/A
8'	4	6.75	25	0.48	32	0.18	21	0.54	62	0.72	82	N/A	N/A	N/A	N/A	N/A
10'	4	6.75	30	0.48	32	0.23	26	0.68	78	0.90	104	N/A	N/A	N/A	N/A	N/A
12'	6	6.75	25	0.72	48	0.27	31	0.81	93	1.07	124	N/A	N/A	N/A	N/A	N/A
45° OS	2	N/A	N/A	0.58	48	0.02	2	0.06	7	0.08	9	N/A	N/A	N/A	N/A	N/A
90° OS	2	N/A	N/A	0.58	48	0.04	4	0.12	13	0.15	18	N/A	N/A	N/A	N/A	N/A

OPTIONAL HIGH OUTPUT LED LIGHTS (115 VOLT)

CASE LENGTH	CANOPY LIGHTS H.O. LED		SHELF LIGHTS H.O. LED		MAX. H.O. LED LOAD	
	AMPS	WATTS	AMPS	WATTS	AMPS	WATTS
4'	0.13	15	0.40	46	0.53	61
5'	N/A	N/A	N/A	N/A	N/A	N/A
6'	0.23	26	0.68	78	0.90	104
8'	0.26	30	0.79	91	1.06	122
10'	N/A	N/A	N/A	N/A	N/A	N/A
12'	0.40	46	1.19	137	1.59	183
45° OS	N/A	N/A	N/A	N/A	N/A	N/A
90° OS	N/A	N/A	N/A	N/A	N/A	N/A