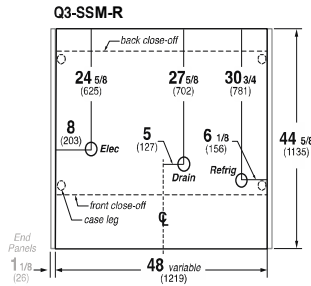
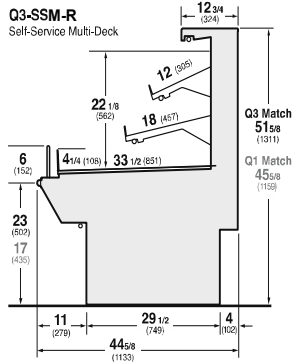
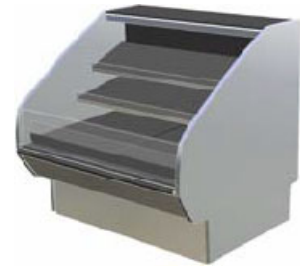




SELF-SERVICE DELI
HUSSMANN - Q3-SSM-R (CHINO)

REVISION DATE 06/16/23

DOE 2017 Energy Efficiency Compliant Hussmann refrigerated merchandisers configured for sale for use in the United States meet or surpass the requirements of the DOE 2017 energy efficiency standards.



REFRIGERATION DATA:

CASE LENGTHS/ WEDGES	CASE USAGE	CAPACITY *** (BTU/HR/FT) (TOTAL FOR WEDGES)		TEMPERATURE (°F)			VELOCITY (FT/MIN)
		RATING CONDITION		EVAPORATOR		DISCHARGE AIR ** (°F)	
		NSF 7	AHRI 1200	NSF 7	AHRI 1200	NSF 7	NSF 7
4',6',8',12'	SS DELI	850	850	20	20	26~32	150~200

CASE LENGTHS	EST. REFG. CHRG. 404A (LBS)	GLYCOL (20°F INLET, 6° RISE)	
		FRONT	
		GPM	PSI
4'	0.5	1.3	3.4
6'	0.7	1.9	7.7
8'	1.0	2.5	3.5
12'	1.5	3.6	7.1

**FRONT DISCHARGE AIR MEASURED INSIDE AIR CURTAIN HONEYCOMB
 ***REFRIGERATION NOTES:

- 1) BTU'S DO NOT INCLUDE CANOPY LIGHTS. ADD 10 BTUS/SHELF/FT FOR EACH SHELF (LIGHT)
- 2) AHRI 1200 RATING POINT FOR ENERGY CONSUMPTION COMPARISON ONLY
- 3) USE DEW POINT FOR HIGH GLIDE REFRIGERANTS. CARE SHOULD BE TAKEN TO USE THE DEW POINT IN P/T TABLES FOR MEASURING AND ADJUSTING SUPERHEAT. ADJUST EVAPORATOR PRESSURE AS NEEDED TO MAINTAIN THE DISCHARGE AIR TEMPERATURE SHOWN.
- 4) RATING CONDITION IS NSF TYPE I, 75°F/55% RH.

REFRIGERATION DATA CONTINUED:

LOCATION	ELEC. THERMOSTAT / AIR SENSOR SETTINGS			DEFROST TYPE	TIME (MIN)	DEFROST FREQUENCY (#/DAY)	TERM. TEMP (°F) COIL ONLY	DRIP TIME	DEFROST WATER (LBS/DAY/FT)
	USAGE	CUT IN (°F)	CUT OUT (°F)						
4',6',8',12'	SS DELI	30	27	OFF TIME	30	4	48	N/A	9.1

END PANEL WIDTH KEY		
# OF END PNLS	END PNL WIDTH (IN.)	TOTAL ADDED LENGTH (IN.)
1	1.125	1.125
2	1.125	2.25

ELECTRICAL DATA: STANDARD FANS, HEATERS, LED LIGHTS (115 VOLT)

CASE LENGTH	EVAPORATOR FANS (STANDARD)					CANOPY LIGHTS LED		OPTIONAL LED SHELF LIGHTS		MAX. LED LOAD (W/ ALL OPTIONS)		ANTI-SWEAT HEATERS (ON FAN CIRCUIT)		CONVENIENCE OUTLETS (OPTIONAL)		
	# OF EVAP FANS	BLADE DIA. (IN.)	BLADE PITCH (°)	AMPS	WATTS	AMPS	WATTS	AMPS	WATTS	AMPS	WATTS	AMPS	WATTS	# OUTLETS	VOLTS	AMPS
4'	2	6.7	25	0.2	16	0.1	10	0.2	21	0.3	31	N/A	N/A	N/A	N/A	N/A
6'	3	6.7	25	0.4	24	0.1	15	0.3	31	0.4	46	N/A	N/A	N/A	N/A	N/A
8'	4	6.7	25	0.5	32	0.2	21	0.4	41	0.6	62	N/A	N/A	N/A	N/A	N/A
12'	6	6.7	25	0.7	48	0.3	31	0.5	62	0.8	93	N/A	N/A	N/A	N/A	N/A