

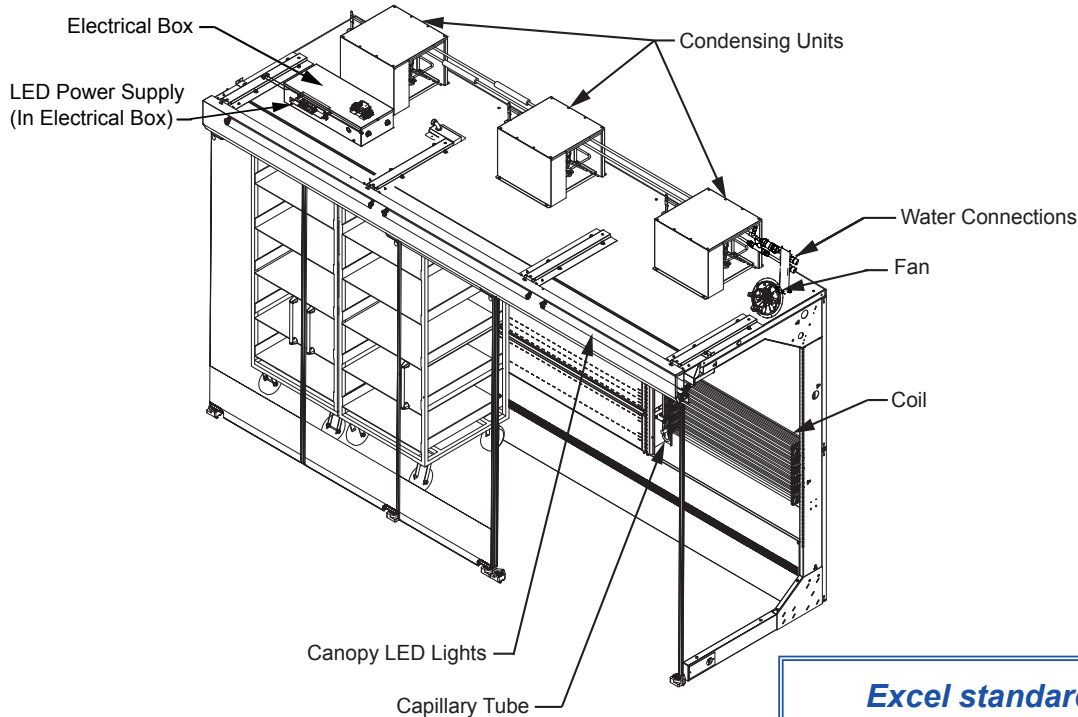
Dairy / Delicatessen  
Self-Contained  
R290 (Propane)

Merchandise Data Sheet

**P/N 3051055\_H**

**UL EPH® Certified**

February 2024



**DOE 2017**  
Energy Efficiency  
Compliant



Portion of parts removed for clarity.

5-Door merchandiser shown.

**Excel standard electrical connections are at the top of the merchandiser**

### UL EPH Certification

This merchandiser model is manufactured to meet ANSI/SCC Standards requirements for construction, materials, and cleanability.

**IMPORTANT**  
**ONE FLOOR DRAIN IS REQUIRED FOR EACH CASE.**

Performance Data	Page 2	Estimated Shipping Weights	Page 6
Product Data (AHRI Statistics)	Page 2	Shelf Options	Page 6
Cross Section	Page 3	Wiring Diagrams	Page 7
Plan View	Page 4	Door Assembly	Page 9
Electrical Loads	Page 5	QR Code for Parts and Product Information	Page 10
		Revision History	Page 10

Data sheet-Excel DD5X5FRW

We reserve the right to change or revise specifications and product design in connection with any feature of our products. Such changes do not entitle the buyer to corresponding changes, improvements, additions or replacements for equipment previously sold or shipped.

**Excel DD5X5FRW**  
Dairy / Delicatessen

**Refrigeration Data <sup>1</sup>**

DD5X5FRW		Optimal Conditions	
Application		Dairy/Deli	
		Cut In	Cut Out
<b>5-Door Case</b>	Discharge Air °F (°C)	33 (0.5)	30 (-1.1)
	Average Evaporator °F (°C)	24.2 (-4.3)	
<b>Fan Speed</b>	DD5X5FRW (7")	1800	

Notes:

1. All data based on store temperature and humidity that does not exceed NSF Type 1 ambient conditions of 75°F and 55% relative humidity, except where noted.
2. Water supply design conditions are 80°F (26.6°C).

**Compressor Data**

**Total Heat of Rejection**    **BTU/Hr**  
**5-Door**                            11,700

**Defrost Data**

**Frequency** (hours between defrost)    12

**OFFTIME**                                    **DD5X5FRW**  
**Time (minutes)**                            60

**ELECTRIC OR GAS**                        Not Available

**Defrost Water** <sup>4</sup>                        .85 lb/ft/day  
    (1.26 kg/m)

<sup>4</sup> (± 15% based on case configuration and product loading).

**DD5X5FRW**

**Cooling Water Pressure Drop** <sup>4</sup>

**PSI**

**5 Dr**    13

<sup>4</sup> Auto-Balancing Valve requires a minimum of 2 PSI to operate. Subtract 2 PSI if the Auto-Balancing Valve is not supplied.

**DD5X5FRW**

**Glycol/Water Flow Rate** <sup>5</sup>

**GPM    LPM**

**5-Door**    4.0    15.1

**Charge** <sup>6</sup>

**5-Door**    0.33 lb    5.29 oz    149.7 g

<sup>5</sup> Use a pre-mixed inhibited glycol solution. If the mixing is to be done on site, use only distilled or de-ionized water (do not use city water).

<sup>6</sup> Maximum charge per condensing unit = 150 g.

**Product Data**

**Gross Refrigerated Volume**<sup>7</sup> (Cu Ft/Ft)                    20.46 ft<sup>3</sup>/ft (0.87 m<sup>3</sup>/m)

**AHRI Total Display Area**<sup>8</sup> (Sq Ft/Ft)                    5.32 ft<sup>2</sup>/ft (0.49 m<sup>2</sup>/m)

<sup>7</sup> AHRI Gross Refrigerated Volume: Refrigerated Volume/Unit of Length, ft<sup>3</sup>/ft [m<sup>3</sup>/m]

<sup>8</sup> Computed using AHRI 1200 standard methodology: Total Display Area, ft<sup>2</sup> [m<sup>2</sup>]/Unit of Length, ft [m]

**DOE 2017**  
Energy Efficiency  
Compliant

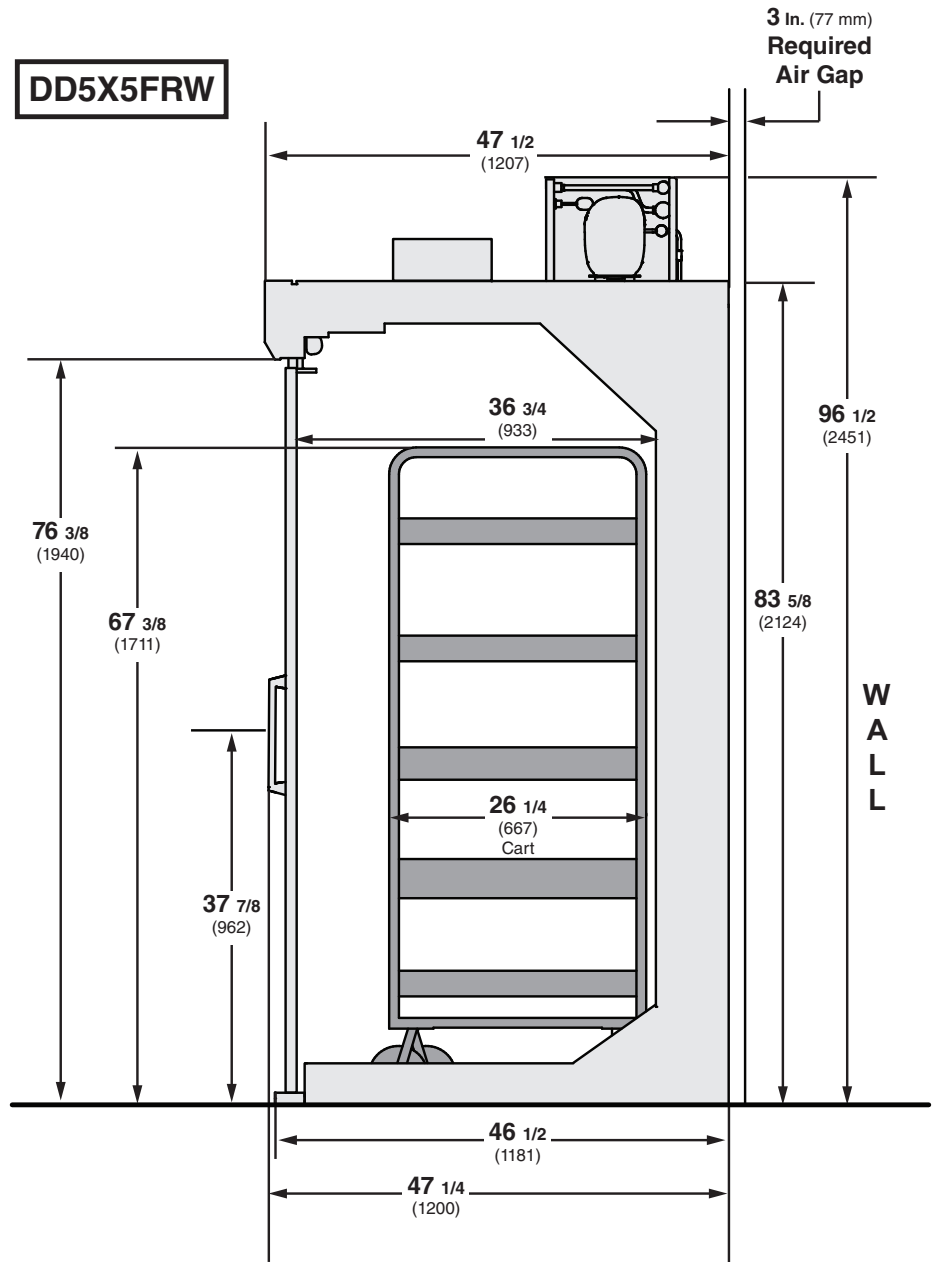
Hussmann refrigerated merchandisers configured for sale for use in the United States meet or surpass the requirements of the DOE 2017 energy efficiency standards.

Dimensions shown as in. and (mm).

A minimum 1 1/2-in. clearance required to remove raceway cover, 6 1/2-in. for full access. See the Installation manual for instructions.

Allow 25 3/4-in for door swing.

3-in. between back to back cases.



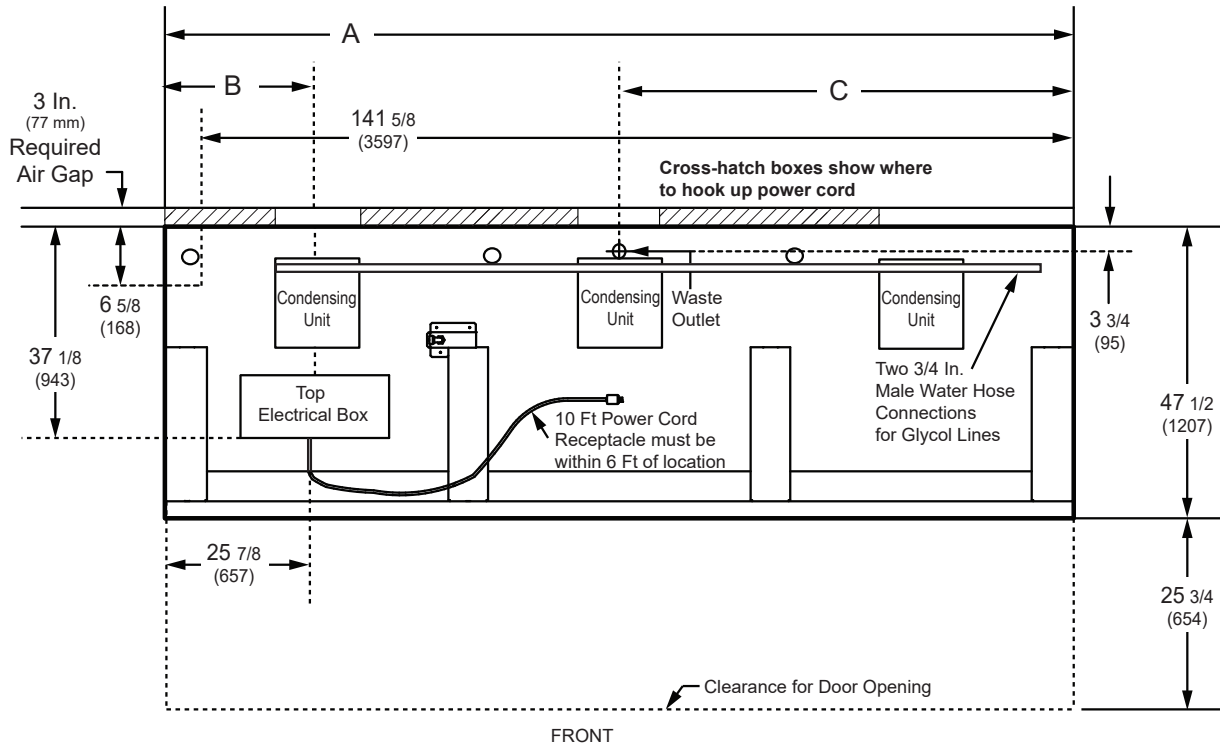
**UL EPH Certification**

This merchandiser model is manufactured to meet ANSI/SCC Standards requirements for construction, materials, and cleanability.

# Engineering Plan View

DD5X5FRW

Dimensions shown as in. and (mm).



(5-Door Model shown above)

	5-Door
<b>General</b>	
(A) Case Length (without ends or partitions) (Each end and insulated partition adds 1 1/2 in. (38 mm) to case line up.)	147 3/4 (3753)
Maximum O/S dimension of case back to front (includes bumper)	47 1/2 (1207)
<b>Electrical Service (Field Electrical Wiring Connection)</b>	
(B) LH End of case to center of Electrical Wiring Connection (top of case)	25 7/8 (657)
Back of case to front of Electrical Wiring Connection	37 1/8 (943)
Length of electrical wireway	25 1/4 (641)
<b>Waste Outlets (One at each end)</b>	
(C) RH End of case to the center of waste outlet	73 7/8 (1876)
Back O/S of case to center of waste outlet(s)	3 3/4 (95)
Schedule 40 PVC drip pipe	1 1/4 (32)

## Electrical Data

**Number of Fans**  
7-in.

**5-Door**  
6

**Evaporator Fan**  
120V 60Hz Energy Efficient

**Amperes**  
**5-Door**  
0.96

**Watts**  
**5-Door**  
61.8

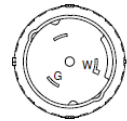
### Condensing Unit (120V, 1 ph, 60 Hz) Standard

**NOTE:** One compressor can start at a time.

Compressor RLA  
Compressor LRA

27  
44/unit

### NEMA Plugs



HUBBLE CS6361C  
OR EQUIVALENT  
50A 125V UL/CSA

### Merchandiser Circuit Requirements (120V, 1 Ph, 60 Hz)

Total Amps  
MCA  
Maximum Over Current Protection

28.8  
31.05  
50

### Electrical Plug - NEMA

HUBBLE CS6361C or equivalent 50A 125V UL/CSA

**ONLY LIGHTING CONFIGURATIONS THAT ARE COMPLIANT WITH THE U.S. DEPT. OF ENERGY (DOE) 2017 REGULATION ARE AVAILABLE FOR SALE FOR USE IN THE U.S.A.**

**STANDARD LIGHTING**  
**EcoShine II Canopy**  
1 Row EcoShine II HO

**Amperes**  
**5-Door**  
0.84

**Watts**  
**5-Door**  
100.8

**Excel DD5X5FRW**  
Dairy / Delicatessen

**ENDS or PARTITIONS**

*Each standard end and each insulated partition adds 1 1/2 in. (38 mm) to case line up. Optional view end with end bumper adds 3 3/4 in. (95 mm).*

**PHYSICAL DATA**

Merchandiser Drip Pipe (in.) 1 1/4  
Schedule 40 PVC

**ESTIMATED SHIPPING WEIGHT †**

**Case**

**5-Door**

**lb (kg)**

1010 (458)

† Actual weights will vary according to optional kits included.

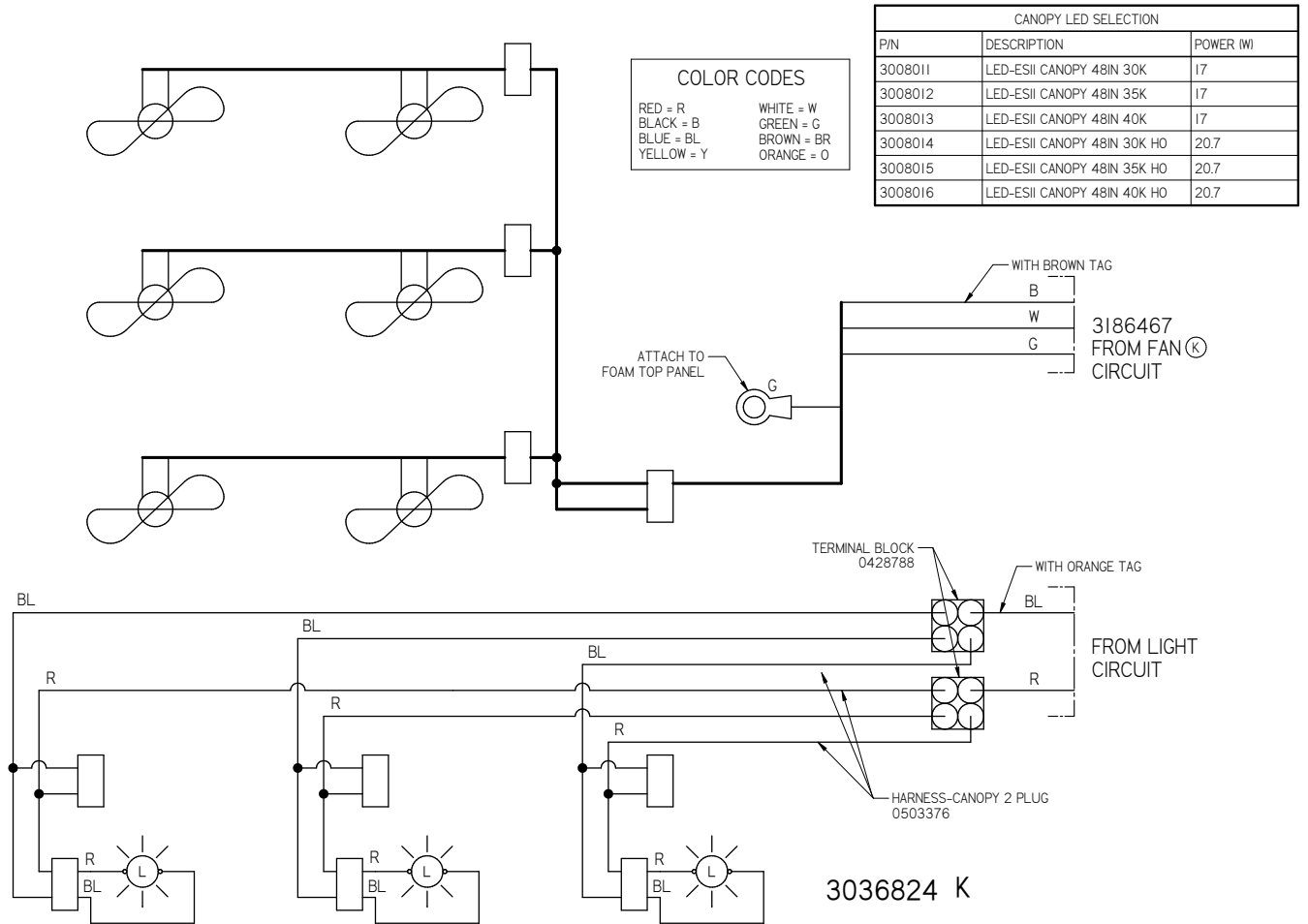
---

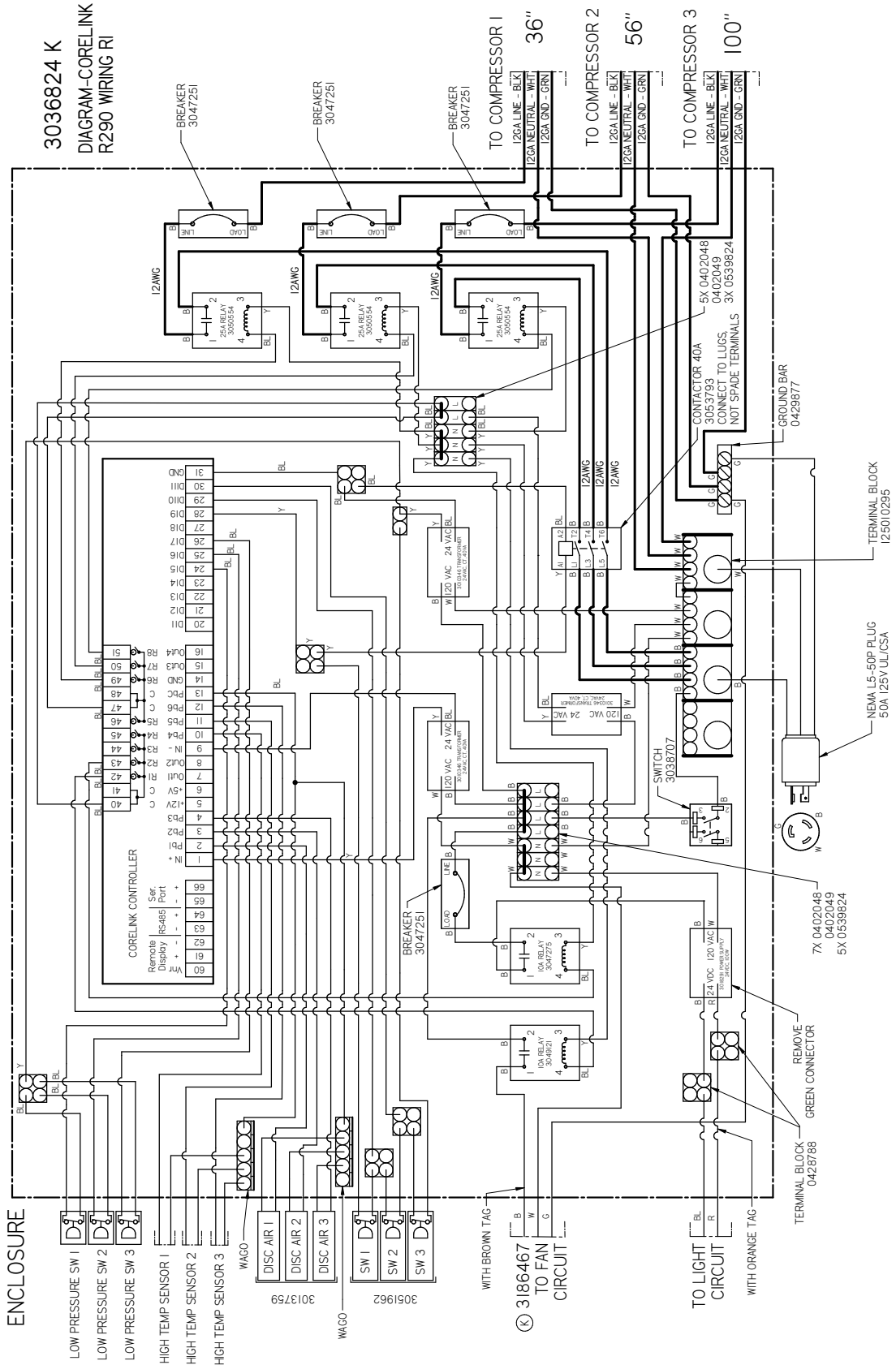
**Shelf Options**

Not Applicable

# Corelink Configuration Electrical Box

Excel **DD5X5FRW**  
Dairy / Delicatessen



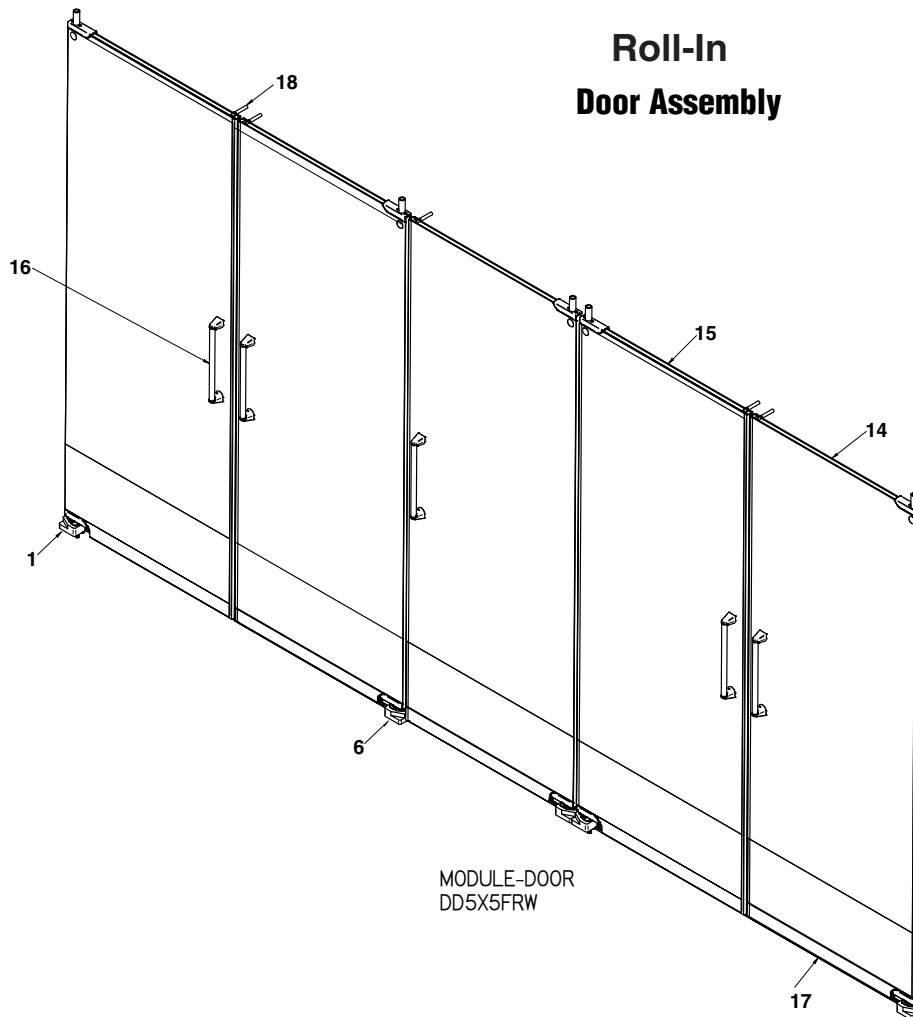




# Door Assembly

**Excel DD5X5FRW**  
Dairy / Delicatessen

ITEM	TITLE	QTY
1	BASE PLATE-DOOR LH	2
2	COVER-PIVOT BEARING LH	2
3	CAP	5
4	SWIVEL GUIDE-DOOR LH	2
5	SPACER-DOOR HEIGHT	10
6	BASE PLATE-DOOR RH	3
7	COVER-PIVOT BEARING RH	3
8	SWIVEL GUIDE-DOOR RH	3
9	SCREW-LOWERING HD 3X12	10
10	SCREW-LOWERING HD 3X16	10
11	BOLT-M8 X 30	5
12	BOLT-M8 X 40	5
13	INSERT-M8 CONCRETE	10
14	ASSEMBLY-DOOR RH	3
15	ASSEMBLY-DOOR LH	2
16	HANDLE-DOOR	5
17	WIPER-DOOR BOT CLR .366X25.98	5
18	DAMPENER-DOOR DD5X5FRW	5





Scan the QR code with your mobile device to access additional product information or order parts.

Parts may also be ordered at:

**parts.husmann.com**

**Call toll free: 1.855.487.7778**

---

## Revision History

Revision A: January 2018: Original Issue

Revision B: April 2018: New format

Revision C: May 2018: Removed NSF references.

Revision D: September 2018: Updated door assembly parts and wiring diagrams.

Revision E: October 2018: Updated water connections and power locations.

Revision F: February 2019: Added MicroDS logo.

Revision G: October 2021: Updated wiring diagrams, removed replacement parts page, and updated door assembly drawing.

Revision H: February 2024: Updated recommended shelf depth and electrical data. Revised pump amps & wiring diagram.