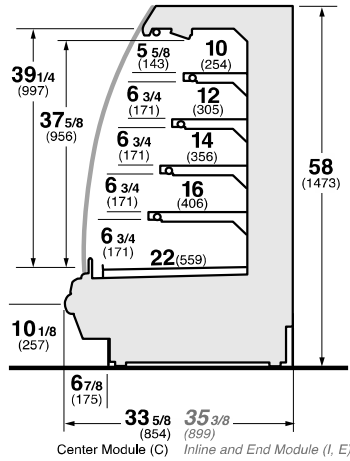




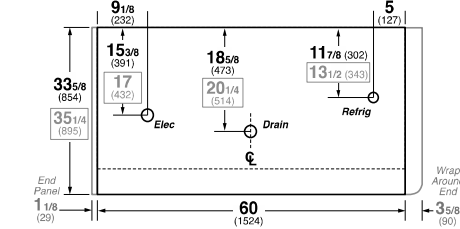
DOE 2017
Energy Efficiency
Compliant

Hussmann refrigerated merchandisers configured for sale for use in the United States meet or surpass the requirements of the DOE 2017 energy efficiency standards.

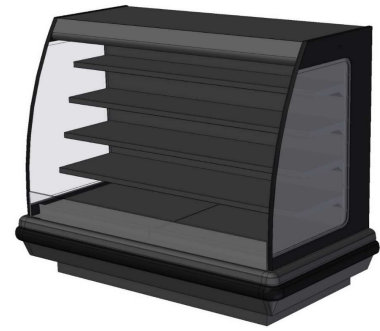
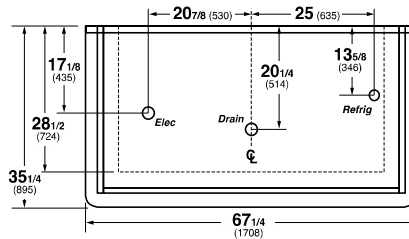
IM-X-05
IM-05-R
Refrigerated Self-Service Module



IM-X-C4-R Center Module / **IM-X-I4-R** In-line Module
IM-X-C5-R Center Module / **IM-X-I5-R** In-line Module
IM-C5-R Center Module / **IM-I5-R** In-line Module



IM-X-05-E5-R End Module
IM-E5-R End Module



REFRIGERATION DATA:

CASE LENGTHS	CASE USAGE	CAPACITY *** (BTU/HR/FT)		TEMPERATURE (°F)			VELOCITY (FT/MIN)
		RATING CONDITION		EVAPORATOR		DISCHARGE AIR ** (°F)	
		NSF 7	AHRI 1200	NSF 7	AHRI 1200	NSF 7	NSF 7
3',4',5',6',8',10',12'	DELI / DAIRY	1110	905	25	26	30~32	225~250
3',4',5',6',8',10',12'	DELI (CO2)	1200	905	24	24	28~30	225~250
3',4',5',6',8',10',12'	MEAT	1430	905	21	26	28~30	225~250

**FRONT DISCHARGE AIR MEASURED INSIDE AIR CURTAIN HONEYCOMB

***REFRIGERATION NOTES:

- 1) BTU'S INCLUDE CANOPY LIGHTS ONLY. ADD 10 BTUS/SHELF/FT FOR EACH SHELF (LIGHT)
- 2) MEAT CASE SPECS ARE FOR PACKAGED MEAT.
- 3) AHRI 1200 RATING POINT FOR ENERGY CONSUMPTION COMPARISON ONLY.
- 4) USE DEW POINT FOR HIGH GLIDE REFRIGERANTS. CARE SHOULD BE TAKEN TO USE THE DEW POINT IN P/T TABLES FOR MEASURING AND ADJUSTING SUPERHEAT. ADJUST EVAPORATOR PRESSURE AS NEEDED TO MAINTAIN THE DISCHARGE AIR TEMPERATURE SHOWN.
- 5) RATING CONDITION IS NSF TYPE I, 75°F/55% RH
- 6) FOR DX CO2 APPLICATIONS, THE AVERAGE EVAPORATOR TEMPERATURE MAY BE LOWERED BY UP TO 2°F TO 5°F BUT NOT MORE THAN 5°F TO MAINTAIN 50PSIG PRESSURE DROP ACROSS THE EXPANSION DEVICE (EEV). AN EEPR VALVE MUST BE USED IF THE SYSTEM SUCTION PRESSURE IS MORE THAN 5 DEGREES BELOW THE PUBLISHED CASE EVAPORATOR TEMPERATURE

CASE LENGTHS	EST. REFG. CHR.G. 404A (LBS)	20°F GLYCOL 6° RISE	
		GPM	PSI
3'	0.7	1.2	1.1
4'	1.0	1.6	2.0
5'	1.2	2.0	3.1
6'	1.4	2.4	1.8
8'	2.0	3.1	2.9
10'	2.5	3.8	4.2
12'	2.9	4.5	3.9

REFRIGERATION DATA CONTINUED:

ELEC. THERMOSTAT / AIR SENSOR SETTINGS			DEFROST TYPE	TIME (MIN)	DEFROST FREQUENCY (#/DAY)	TERM. TEMP (°F) COIL ONLY	DRIP TIME	DEFROST WATER (LBS/DAY/FT)
USAGE	CUT IN (°F)	CUT OUT (°F)						
DELI / DAIRY	33	30	OFF TIME	20	6	52	N/A	7.5
DELI (CO2)	30	28						7.5
MEAT	31	28						9

END PANEL WIDTH KEY		
# OF END PNLS	END PNL	TOTAL ADDED LENGTH (IN.)
1	1.125	1.125
2	1.125	2.25

ELECTRICAL DATA:

STANDARD FANS, HEATERS, LED LIGHTS (115 VOLT)

CASE LENGTH	EVAPORATOR FANS					CANOPY LIGHTS LED		LED SHELF LIGHTS		MAX. LED LOAD (W/ ALL OPTIONS)		ANTI-SWEAT HEATERS (ON FAN CIRCUIT)		CONVENIENCE OUTLETS (OPTIONAL)		
	# OF EVAP FANS	BLADE DIA. (IN.)	BLADE PITCH (°)	AMPS	WATTS	AMPS	WATTS	AMPS	WATTS	AMPS	WATTS	AMPS	WATTS	# OUTLETS	VOLTS	AMPS
3'	1	8	25	0.3	8	0.17	19	0.27	31	0.44	50	N/A	N/A	1	115	15
4'	1	8	25	0.3	8	0.23	27	0.36	41	0.59	68	N/A	N/A	1	115	15
5'	1	8	30	0.3	8	0.30	34	0.45	52	0.75	86	N/A	N/A	1	115	15
6'	2	8	25	0.6	16	0.34	39	0.54	62	0.87	100	N/A	N/A	1	115	15
8'	2	8	25	0.6	16	0.47	54	0.72	82	1.18	136	N/A	N/A	1	115	15
10'	2	8	30	0.6	16	0.59	68	0.90	104	1.49	172	N/A	N/A	1	115	15
12'	3	8	25	0.9	24	0.70	81	1.07	124	1.78	204	N/A	N/A	2	115	30

OPTIONAL HIGH OUTPUT LED LIGHTS (115 VOLT)

CASE LENGTH	CANOPY LIGHTS H.O. LED		SHELF LIGHTS H.O. LED		MAX. H.O. LED LOAD	
	AMPS	WATTS	AMPS	WATTS	AMPS	WATTS
3'	0.21	24	0.45	52	0.66	76
4'	0.28	32	0.53	61	0.81	93
5'	N/A	N/A	N/A	N/A	N/A	N/A
6'	0.41	47	0.90	104	1.31	151
8'	0.56	64	1.06	122	1.61	186
10'	N/A	N/A	N/A	N/A	N/A	N/A
12'	0.83	96	1.59	183	2.42	278