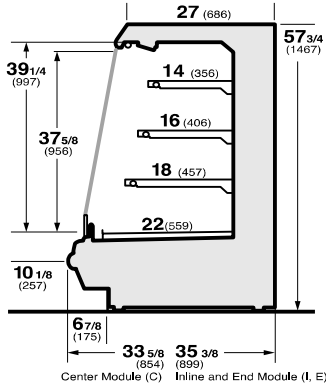


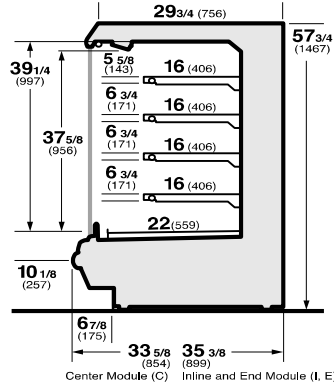
**DOE 2017 Energy Efficiency Compliant** Hussmann refrigerated merchandisers configured for sale for use in the United States meet or surpass the requirements of the DOE 2017 energy efficiency standards.



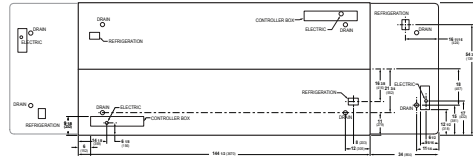
**IM-X-05-EC**  
Refrigerated Self-Service Module



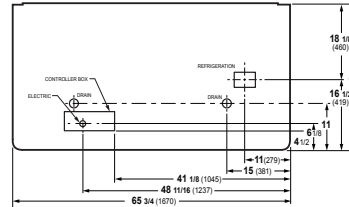
**IM-X-05-R-EC10**  
Refrigerated Self-Service Module



**IM-X-C5-R-EC, EC10 Center Module**  
**IM-C5-R Center Module / IM-I5-R In-line Module**



**IM-X-05-E5-R-EC, EC10 End Module**  
**IM-E5-R End Module**



**REFRIGERATION DATA:**

CASE LENGTH	CASE USAGE	CAPACITY *** (BTU/HR/FT)		TEMPERATURE (°F)			VELOCITY (FT/MIN)
		RATING CONDITION		EVAPORATOR		DISCHARGE AIR ** (°F)	
		NSF 7	AHRI 1200	NSF 7	AHRI 1200	NSF 7	
4',5',6',8',10',12'	DELI / DAIRY	990	990	25	25	30~32	225~250
4',5',6',8',10',12'	DELI (CO2)	1130	990	24	24	28~30	225~250
4',5',6',8',10',12'	MEAT	1175	990	21	25	28~30	225~250

CASE LENGTHS	EST. REFG. CHR.G. 404A (LBS)	20°F GLYCOL 6° RISE	
		GPM	PSI
4'	1.0	1.6	2.0
5'	1.2	2.0	3.1
6'	1.4	2.4	1.8
8'	2.0	3.1	2.9
10'	2.5	3.8	4.2
12'	2.9	4.5	3.9

**\*\*FRONT DISCHARGE AIR MEASURED INSIDE AIR CURTAIN HONEYCOMB**

**\*\*\*REFRIGERATION NOTES:**

- 1) BTU'S INCLUDE CANOPY LIGHTS. ADD 10 BTUS/SHELF/FT FOR EACH SHELF (LIGHT)
- 2) MEAT CASE SPECS ARE FOR PACKAGED MEAT.
- 3) AHRI 1200 RATING POINT FOR ENERGY CONSUMPTION COMPARISON ONLY.
- 4) USE DEW POINT FOR HIGH GLIDE REFRIGERANTS. CARE SHOULD BE TAKEN TO USE THE DEW POINT IN P/T TABLES FOR MEASURING AND ADJUSTING SUPERHEAT. ADJUST EVAPORATOR PRESSURE AS NEEDED TO MAINTAIN THE DISCHARGE AIR TEMPERATURE SHOWN.
- 5) RATING CONDITION IS NSF TYPE I, 75°F/55% RH
- 6) FOR DX CO2 APPLICATIONS, THE AVERAGE EVAPORATOR TEMPERATURE MAY BE LOWERED BY UP TO 2°F TO 5°F BUT NOT MORE THAN 5°F TO MAINTAIN 50PSIG PRESSURE DROP ACROSS THE EXPANSION DEVICE (EEV). AN EEPR VALVE MUST BE USED IF THE SYSTEM SUCTION PRESSURE IS MORE THAN 5 DEGREES BELOW THE PUBLISHED CASE EVAPORATOR TEMPERATURE

**REFRIGERATION DATA CONTINUED:**

ELEC. THERMOSTAT / AIR SENSOR SETTINGS			DEFROST TYPE	TIME (MIN)	DEFROST FREQUENCY (#/DAY)	TERM. TEMP (°F) COIL ONLY	DRIP TIME	DEFROST WATER (LBS/DAY/FT)
USAGE	CUT IN (°F)	CUT OUT (°F)						
DELI / DAIRY	33	30	OFF TIME	20	6	48	N/A	6.5
DELI (CO2)	30	28						6.5
MEAT	31	28						9

END PANEL WIDTH KEY		
# OF END	END PNL	TOTAL ADDED LENGTH (IN.)
1	1.125	1.125
2	1.125	2.25

**ELECTRICAL DATA:**

**STANDARD FANS, HEATERS, LED LIGHTS (115 VOLT)**

CASE LENGTH	EVAPORATOR FANS				CANOPY LIGHTS LED		LED SHELF LIGHTS		MAX. LED LOAD (W/ ALL OPTIONS)		ANTI-SWEAT HEATERS (ON FAN CIRCUIT)		CONVENIENCE OUTLETS (OPTIONAL)			
	# OF EVAP FANS	BLADE DIA. (IN.)	BLADE PITCH (°)	AMPS	WATTS	AMPS	WATTS	AMPS	WATTS	AMPS	WATTS	AMPS	WATTS	# OUTLETS	VOLTS	AMPS
4'	1	8	25	0.3	8	0.23	27	0.27	31	0.50	58	N/A	N/A	N/A	N/A	N/A
5'	1	8	30	0.3	8	0.30	34	0.34	39	0.63	73	N/A	N/A	N/A	N/A	N/A
6'	2	8	25	0.6	16	0.34	39	0.40	46	0.74	85	N/A	N/A	N/A	N/A	N/A
8'	2	8	25	0.6	16	0.47	54	0.54	62	1.01	116	N/A	N/A	N/A	N/A	N/A
10'	2	8	30	0.6	16	0.59	68	0.68	78	1.27	146	N/A	N/A	N/A	N/A	N/A
12'	3	8	25	0.9	24	0.70	81	0.81	93	1.51	173	N/A	N/A	N/A	N/A	N/A

**OPTIONAL HIGH OUTPUT LED LIGHTS (115 VOLT)**

CASE LENGTH	CANOPY LIGHTS H.O. LED		SHELF LIGHTS H.O. LED		MAX. H.O. LED LOAD	
	AMPS	WATTS	AMPS	WATTS	AMPS	WATTS
4'	0.28	32	0.40	46	0.67	78
5'	N/A	N/A	N/A	N/A	N/A	N/A
6'	0.41	47	0.68	78	1.09	125
8'	0.56	64	0.79	91	1.35	155
10'	N/A	N/A	N/A	N/A	N/A	N/A
12'	0.83	96	1.19	137	2.02	233